



1 bedroom flat, Albany Street, NW1

3UP

£4,115 per month | 1 Bedroom Serviced

Apartments





## 1 bedroom flat, Albany Street, NW1

3UP

£4,115 per month | 1 Bedroom Serviced

Apartments

A selection of fully serviced one bedroom apartments in this luxury development situated within a moments walk of Great Portland Street Tube.

MINIMUM STAY 7 NIGHTS. Book Autumn/Winter period by 1st September.

Prices/rates vary with length of stay:

7 nights stay £1270 per week or £181 per night

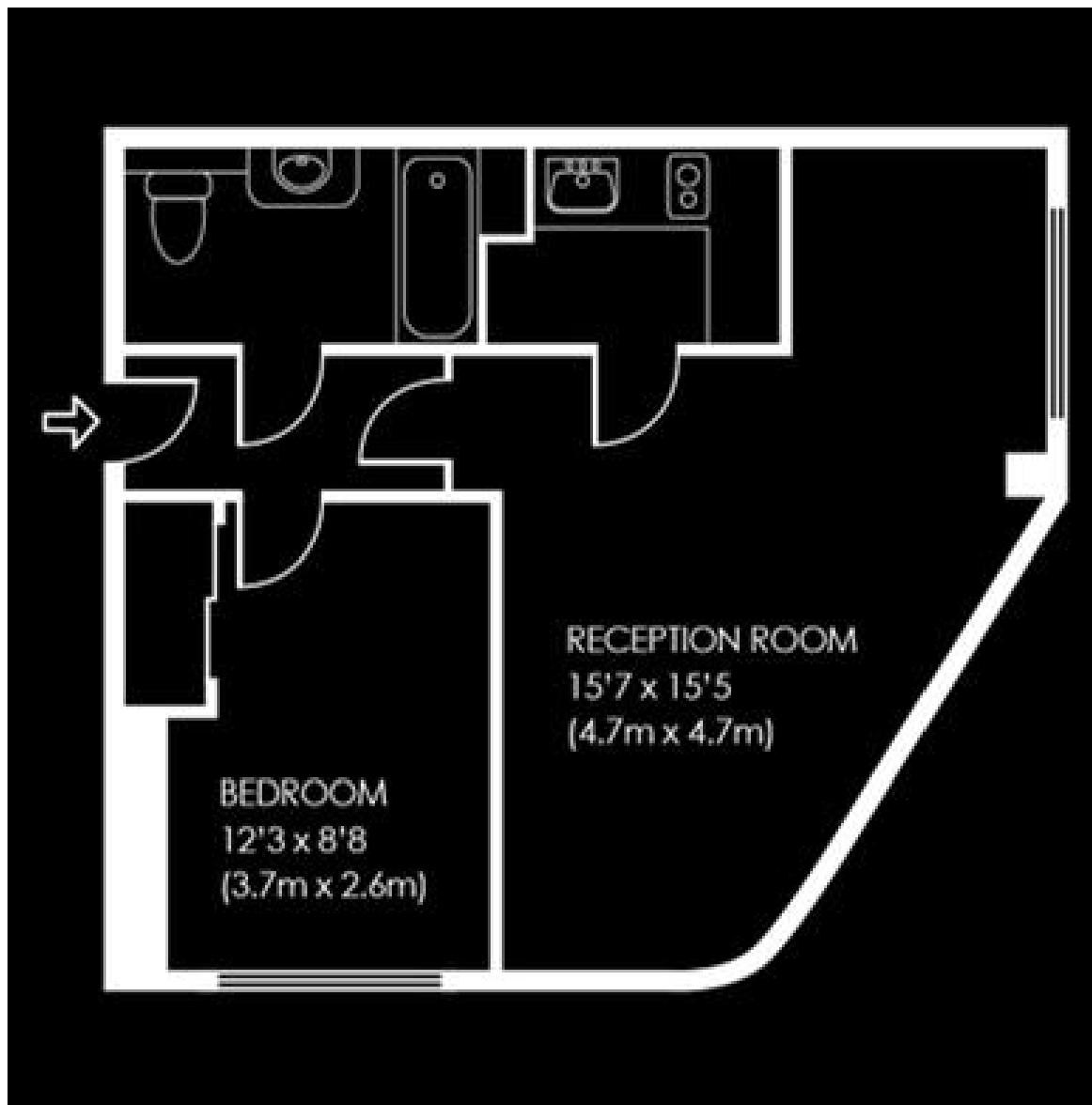
30 nights stay £1210 per week or £160 per night

90 nights stay £950 per week or £135 per night

Rentals include:

The One Bedroom apartment has a double bedroom with king sized bed, an additional bathroom, walk in wardrobe and mini kitchen.

The One Bedroom apartment is serviced 5 times per week to include linen and towel changes.





From the apartment you can walk to get some of the most famous shopping streets of London: Oxford Street, Regents Street and Bond street, the famous landmark of Piccadilly Circus and some of the main attractions of the city such as London Zoo, the Wax Museum Madame Tussauds, Sherlock Holmes Museum and the British Museum are a stones throw away.

Despite being so close to the bustle of the tourist sights and shows in London, the location of the Melia White House is surprisingly quiet and withdrawn and offers the visitor the feeling of British charm and elegance .



## Tenant Terms & Fees

### Tenancy fees and terms for tenants - Short Lets:

- A minimum of a four weeks deposit must be paid in advance for all short let rentals that exceed 60 days duration.
- For short let rentals all moving in monies have to be paid in advance for the duration of the tenancy.
- Long/Short Let Rentals - Mid tenancy to end of tenancy
- Tenant/Occupant change Fee £50 per person
- Deposit- where our client landlord is not a member of any insurance based or custodial scheme, such monies will be held Ashmore Estates Limited as stakeholder in an insurance based scheme TDS (Tenancy deposit scheme).

### Tenancy fees and terms for tenants - Long Lets:

Should you wish to terminate your tenancy before the end of the fixed term and the landlord agrees that you can terminate early, you will be responsible for the repayment of the pro-rata commission paid in advance by the landlord for the unexpired portion of the tenancy, unless you are exercising a break clause which is contained in your tenancy agreement.

It is your obligation to obtain written consent from the landlord for any change in the identity of the tenants. Upon receipt of this consent Ashmore Residential will draw up a tenancy agreement for signature by all parties.

An administration fee of £25 will be charged for each letter sent by Ashmore Residential regarding late or non-payment of rent or administration charges.

Long/Short Let Rentals - Mid tenancy to end of tenancy.

Tenant/Occupant change Fee £50 per person

Deposit- where our client landlord is not a member of any insurance based or custodial scheme, such monies will be held Ashmore Estates Limited as stakeholder in an insurance based scheme TDS (Tenancy deposit scheme).