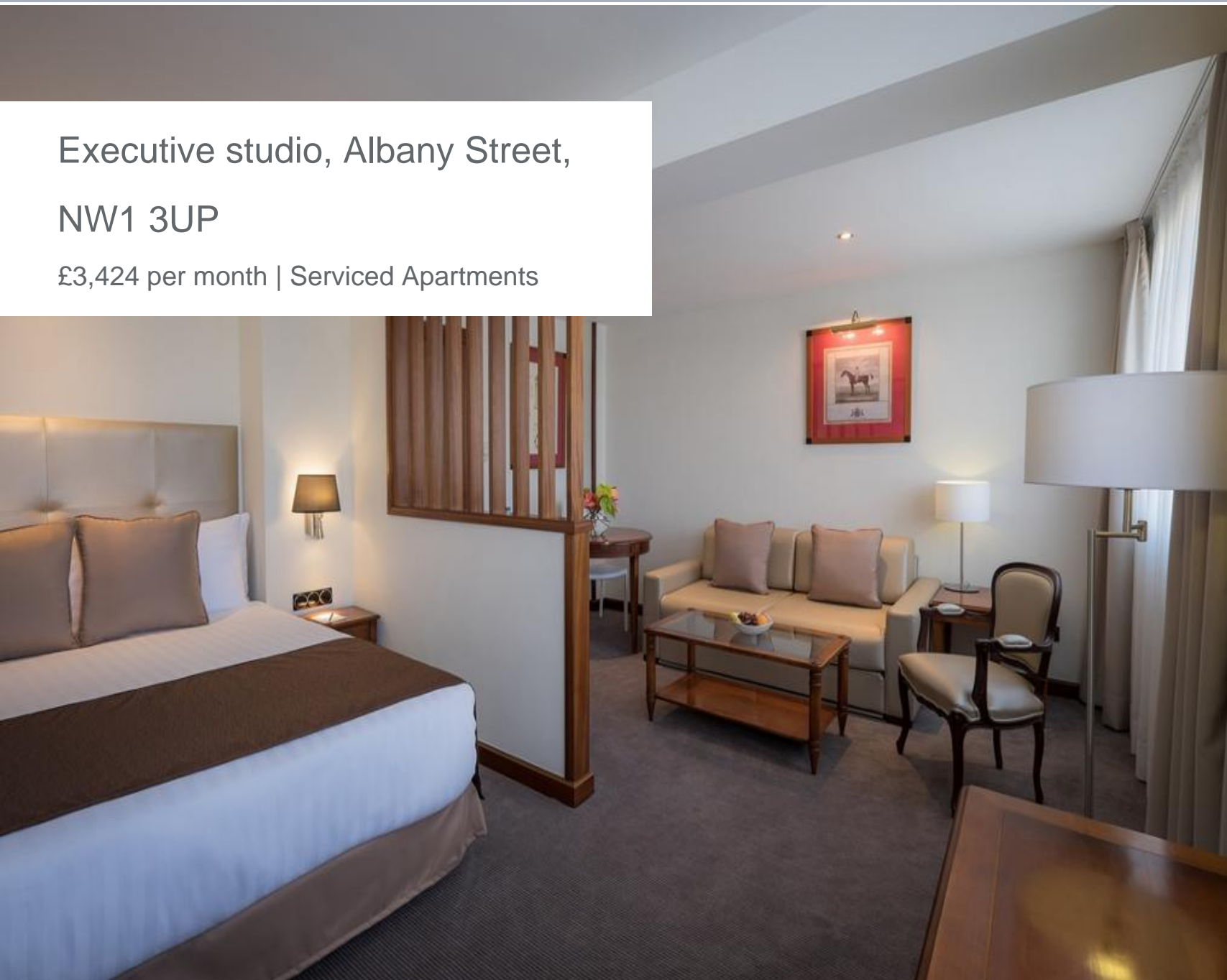




Executive studio, Albany Street,
NW1 3UP

£3,424 per month | Serviced Apartments





Executive studio, Albany Street, NW1

3UP

£3,424 per month | Serviced Apartments

The Executive Apartment has a king sized bed, a large bathroom, walk in wardrobe and mini kitchen.

MINIMUM STAY 7 NIGHTS. Book Autumn/Winter period by 1st September.

Rentals include:

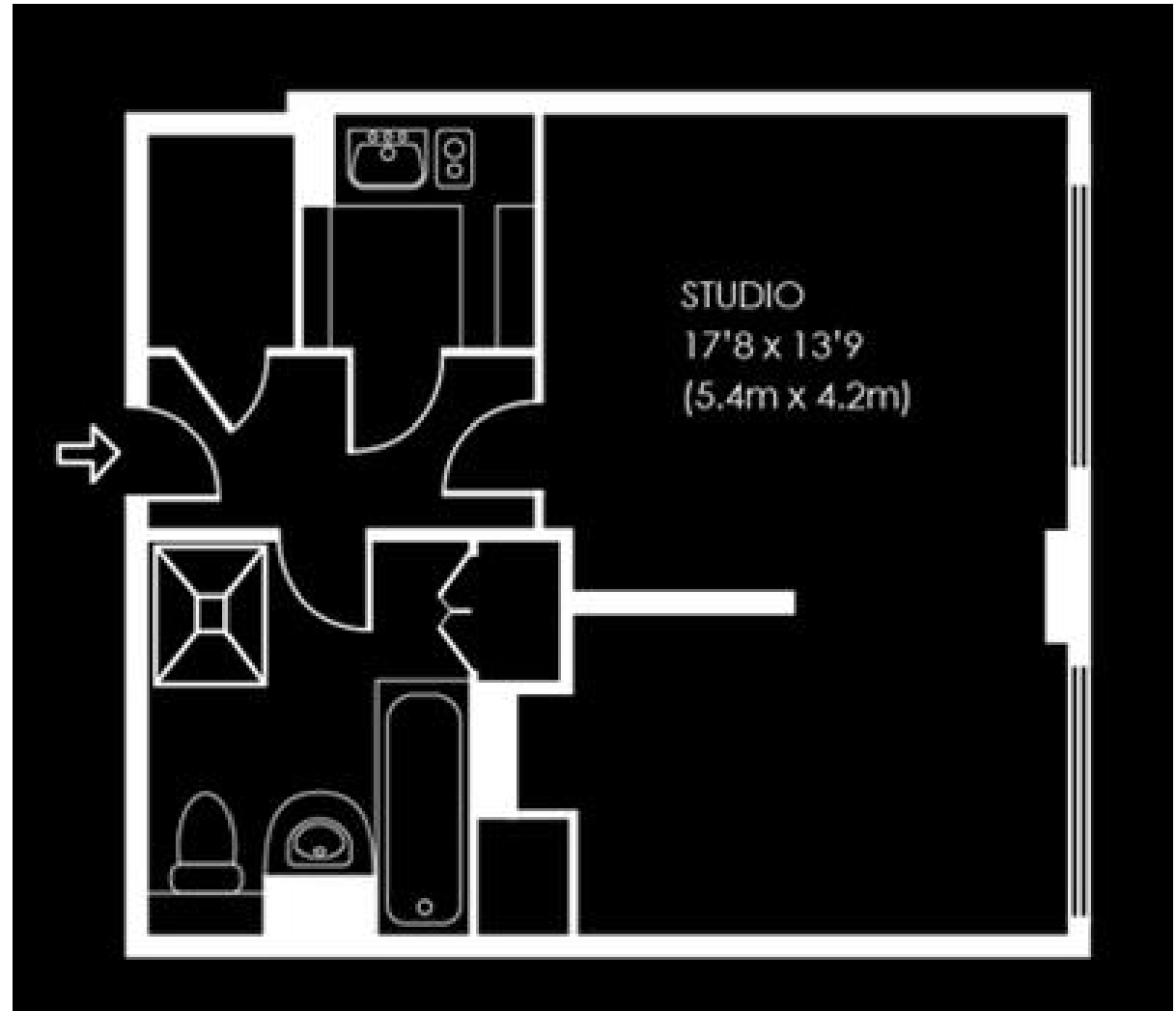
The Executive apartment is serviced 5 times per week to include cleaning, linen and towel changes and with the following amenities: Prices are inclusive of VAT and utilities, internet use. Apartment guests can enjoy all the hotel facilities to include the gym and are offered a discount of 15% on all food and beverages, to include room service, restaurants and the hotel bar.

From the hotel you can walk to get some of the most famous shopping streets of London:

Oxford Street Regents Street and Bond Street the famous landmark of Piccadilly Circus and

Some of the main attractions of the city such as London Zoo, the Wax Museum Madame Tussauds, Sherlock Holmes Museum and the British Museum are a stones throw away.

Despite being so close to the bustle of the tourist sights and shows in





London, the location of the Melia White House is surprisingly quiet and withdrawn and offers the visitor the feeling of British charm and elegance .



Tenant Terms & Fees

Tenancy fees and terms for tenants - Short Lets:

- A minimum of a four weeks deposit must be paid in advance for all short let rentals that exceed 60 days duration.
- For short let rentals all moving in monies have to be paid in advance for the duration of the tenancy.
- Long/Short Let Rentals - Mid tenancy to end of tenancy
- Tenant/Occupant change Fee £50 per person
- Deposit- where our client landlord is not a member of any insurance based or custodial scheme, such monies will be held Ashmore Estates Limited as stakeholder in an insurance based scheme TDS (Tenancy deposit scheme).

Tenancy fees and terms for tenants - Long Lets:

Should you wish to terminate your tenancy before the end of the fixed term and the landlord agrees that you can terminate early, you will be responsible for the repayment of the pro-rata commission paid in advance by the landlord for the unexpired portion of the tenancy, unless you are exercising a break clause which is contained in your tenancy agreement.

It is your obligation to obtain written consent from the landlord for any change in the identity of the tenants. Upon receipt of this consent Ashmore Residential will draw up a tenancy agreement for signature by all parties.

An administration fee of £25 will be charged for each letter sent by Ashmore Residential regarding late or non-payment of rent or administration charges.

Long/Short Let Rentals - Mid tenancy to end of tenancy.

Tenant/Occupant change Fee £50 per person

Deposit- where our client landlord is not a member of any insurance based or custodial scheme, such monies will be held Ashmore Estates Limited as stakeholder in an insurance based scheme TDS (Tenancy deposit scheme).

