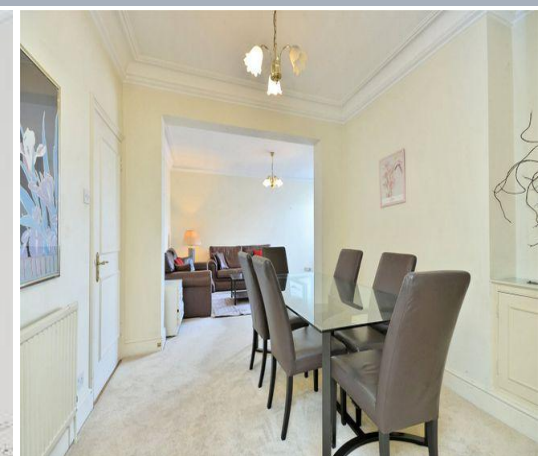
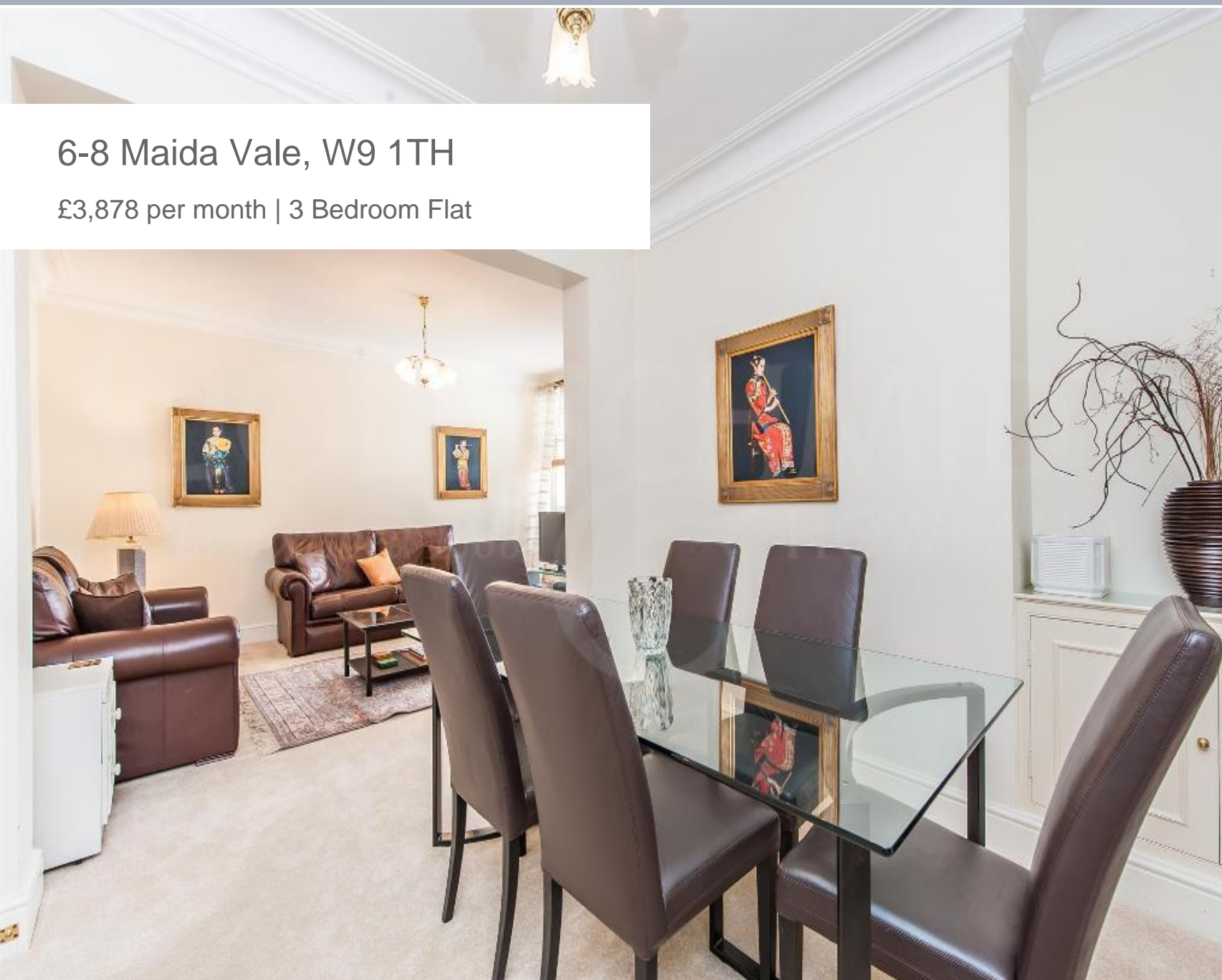




6-8 Maida Vale, W9 1TH

£3,878 per month | 3 Bedroom Flat





6-8 Maida Vale, W9 1TH

£3,878 per month | 3 Bedroom Flat

A substantial three bedroom apartment located on the 6th floor of this mansion block. This flat has been redecorated throughout, offering over 1400 square feet of living space with well proportioned living room that leads to a dining area.

Three bedrooms en-suite with ample fitted storage and integrated kitchen with new appliances.

On site facilities include 24 hour porter , lift and parking is available by separate arrangement.

Rodney Court is located in the heart of Maida Vale. The main shopping facilities of Clifton Road are just a short walk away as well as a wide range of restaurants, bars and cafes. The tube stations at Maida Vale and Warwick Avenue and local bus routes are just moments away. Other local attractions are Regents Canal and the green spaces of Paddington Recreation Grounds.





Tenant Terms & Fees

Tenancy fees and terms for tenants - Short Lets:

- A minimum of a four weeks deposit must be paid in advance for all short let rentals that exceed 60 days duration.
- For short let rentals all moving in monies have to be paid in advance for the duration of the tenancy.
- Long/Short Let Rentals - Mid tenancy to end of tenancy
- Tenant/Occupant change Fee £50 per person
- Deposit- where our client landlord is not a member of any insurance based or custodial scheme, such monies will be held Ashmore Estates Limited as stakeholder in an insurance based scheme TDS (Tenancy deposit scheme).

Tenancy fees and terms for tenants - Long Lets:

Should you wish to terminate your tenancy before the end of the fixed term and the landlord agrees that you can terminate early, you will be responsible for the repayment of the pro-rata commission paid in advance by the landlord for the unexpired portion of the tenancy, unless you are exercising a break clause which is contained in your tenancy agreement.

It is your obligation to obtain written consent from the landlord for any change in the identity of the tenants. Upon receipt of this consent Ashmore Residential will draw up a tenancy agreement for signature by all parties.

An administration fee of £25 will be charged for each letter sent by Ashmore Residential regarding late or non-payment of rent or administration charges.

Long/Short Let Rentals - Mid tenancy to end of tenancy.

Tenant/Occupant change Fee £50 per person

Deposit- where our client landlord is not a member of any insurance based or custodial scheme, such monies will be held Ashmore Estates Limited as stakeholder in an insurance based scheme TDS (Tenancy deposit scheme).

