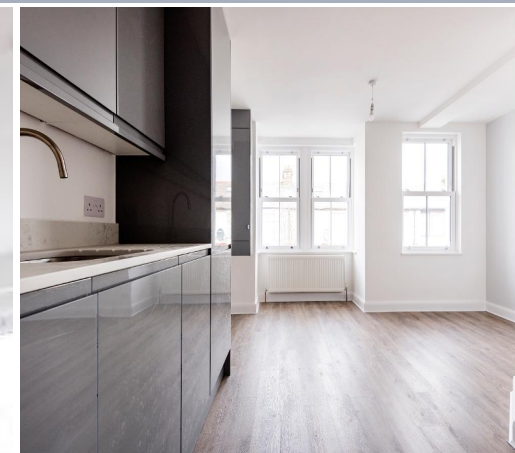
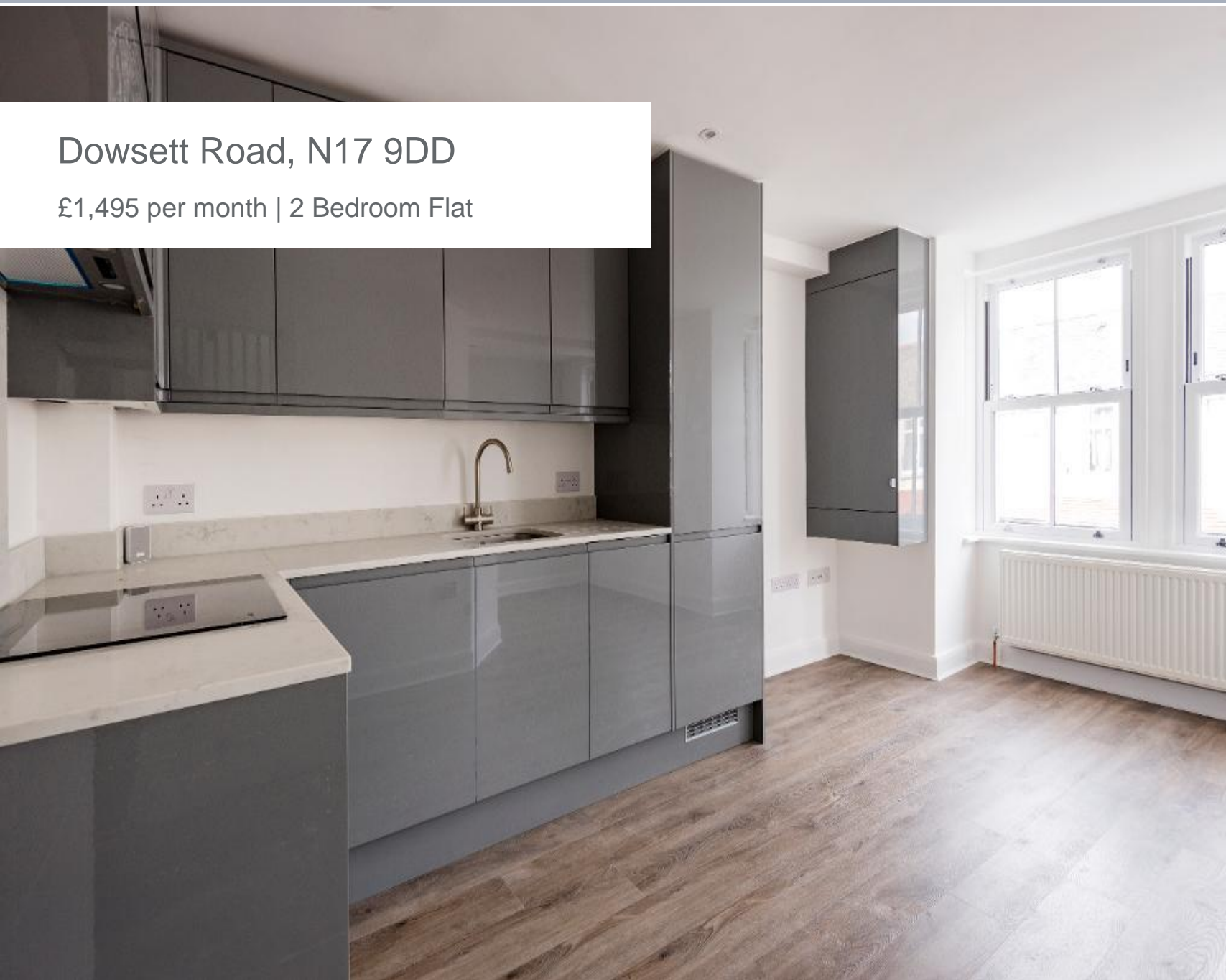




## Dowsett Road, N17 9DD

£1,495 per month | 2 Bedroom Flat





## Dowsett Road, N17 9DD

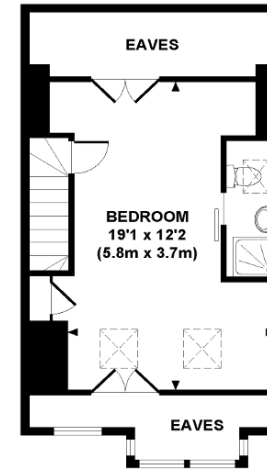
£1,495 per month | 2 Bedroom Flat

A stunning two bedroom luxury flat in this brand new development. Arranged over the top 2 floors this exceptional flat is offered with a striking contemporary interior and high quality fittings. There is an open plan integrated kitchen with all appliances and granite worktops, leading to the living room with wood floors and space to dine.

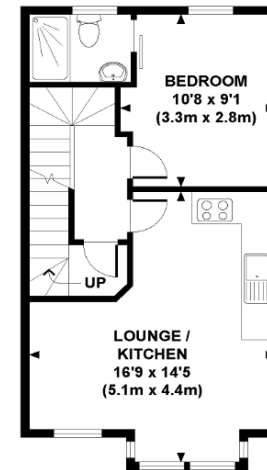
Main bedroom with en-suite and plenty of fitted storage, second bedroom with fitted storage and en-suite.

Dowsett Road has a central location and is just moments from the independent shops, restaurants and supermarkets of the High Road. The area is well served by extensive local transport with Bruce Grove rail station a short walk away. The tube and rail stations at Seven Sisters and Tottenham Hale with the retail park are also close to hand.

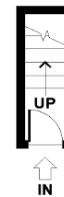
Other local attractions include Tottenham Hotspur Football Ground and Bruce Castle Park.



SECOND FLOOR  
GROSS INTERNAL  
FLOOR AREA 383 SQ FT



FIRST FLOOR  
GROSS INTERNAL  
FLOOR AREA 383 SQ FT



GROUND FLOOR  
GROSS INTERNAL  
FLOOR AREA 19 SQ FT



## Tenant Terms & Fees

### Tenancy fees and terms for tenants - Short Lets:

- A minimum of a four weeks deposit must be paid in advance for all short let rentals that exceed 60 days duration.
- For short let rentals all moving in monies have to be paid in advance for the duration of the tenancy.
- Long/Short Let Rentals - Mid tenancy to end of tenancy
- Tenant/Occupant change Fee £50 per person
- Deposit- where our client landlord is not a member of any insurance based or custodial scheme, such monies will be held Ashmore Estates Limited as stakeholder in an insurance based scheme TDS (Tenancy deposit scheme).

### Tenancy fees and terms for tenants - Long Lets:

Should you wish to terminate your tenancy before the end of the fixed term and the landlord agrees that you can terminate early, you will be responsible for the repayment of the pro-rata commission paid in advance by the landlord for the unexpired portion of the tenancy, unless you are exercising a break clause which is contained in your tenancy agreement.

It is your obligation to obtain written consent from the landlord for any change in the identity of the tenants. Upon receipt of this consent Ashmore Residential will draw up a tenancy agreement for signature by all parties.

An administration fee of £25 will be charged for each letter sent by Ashmore Residential regarding late or non-payment of rent or administration charges.

Long/Short Let Rentals - Mid tenancy to end of tenancy.

Tenant/Occupant change Fee £50 per person

Deposit- where our client landlord is not a member of any insurance based or custodial scheme, such monies will be held Ashmore Estates Limited as stakeholder in an insurance based scheme TDS (Tenancy deposit scheme).

