



Mountview Road, N4 4SL

£2,579 per month | 3 Bedroom Flat





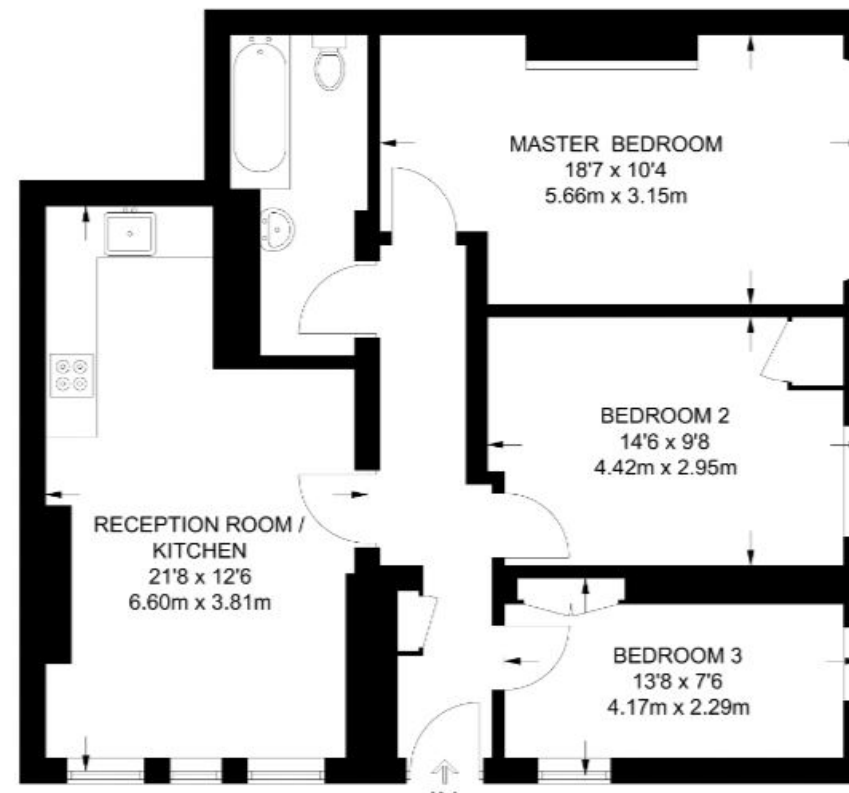
Mountview Road, N4 4SL

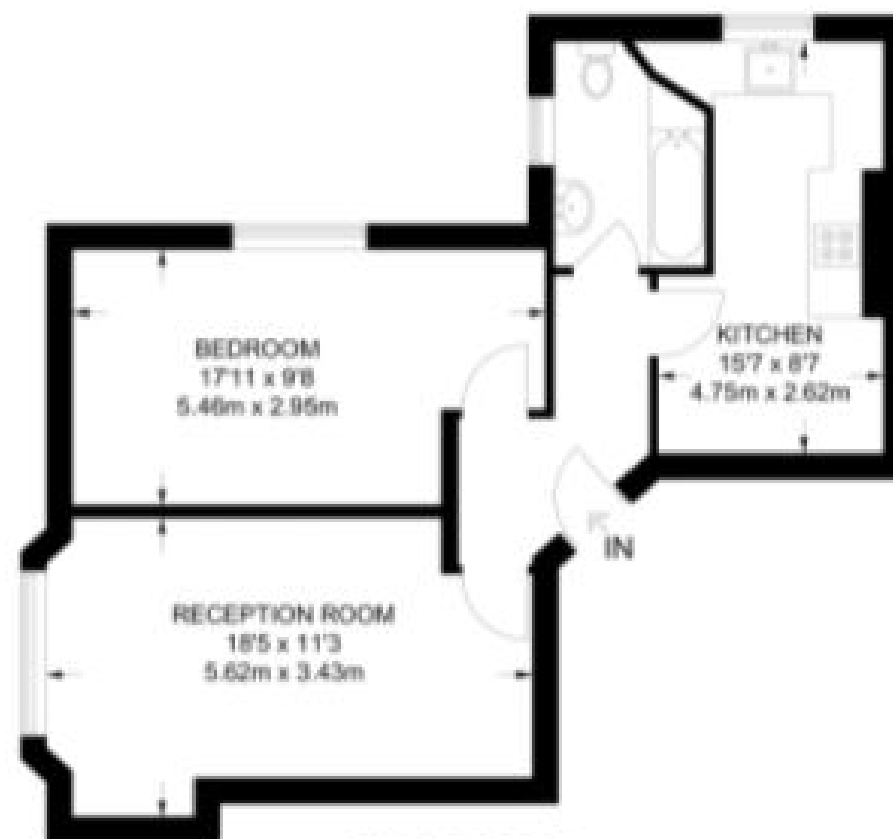
£2,579 per month | 3 Bedroom Flat

This three bedroom flat is offered with bright, neutral decor. The living room features a dining space leading to the kitchen. The third bedroom can be utilised as a study/office and the flat also features wood floors throughout.

Mountview Road is just a short walk to Crouch End Broadway and Stroud Green Road with its numerous shops, bars and restaurants. The area is well served by reliable transport links with Finsbury Park tube and rail station in the vicinity. The open spaces of Alexandra Park are also close by.

APPROXIMATE FLOOR AREA = 819 SQ FT / 76.1 SQ M
INCLUDING LIMITED USE AREA (14 SQ FT / 1.3 SQ M)





FIRST FLOOR

APPROXIMATE GROSS INTERNAL AREA
571 SQ FT / 53 SQ M



Tenant Terms & Fees

Tenancy fees and terms for tenants - Short Lets:

- A minimum of a four weeks deposit must be paid in advance for all short let rentals that exceed 60 days duration.
- For short let rentals all moving in monies have to be paid in advance for the duration of the tenancy.
- Long/Short Let Rentals - Mid tenancy to end of tenancy
- Tenant/Occupant change Fee £50 per person
- Deposit- where our client landlord is not a member of any insurance based or custodial scheme, such monies will be held Ashmore Estates Limited as stakeholder in an insurance based scheme TDS (Tenancy deposit scheme).

Tenancy fees and terms for tenants - Long Lets:

Should you wish to terminate your tenancy before the end of the fixed term and the landlord agrees that you can terminate early, you will be responsible for the repayment of the pro-rata commission paid in advance by the landlord for the unexpired portion of the tenancy, unless you are exercising a break clause which is contained in your tenancy agreement.

It is your obligation to obtain written consent from the landlord for any change in the identity of the tenants. Upon receipt of this consent Ashmore Residential will draw up a tenancy agreement for signature by all parties.

An administration fee of £25 will be charged for each letter sent by Ashmore Residential regarding late or non-payment of rent or administration charges.

Long/Short Let Rentals - Mid tenancy to end of tenancy.

Tenant/Occupant change Fee £50 per person

Deposit- where our client landlord is not a member of any insurance based or custodial scheme, such monies will be held Ashmore Estates Limited as stakeholder in an insurance based scheme TDS (Tenancy deposit scheme).

Energy Efficiency Rating			
Score	Energy rating	Current	Potential
92+	A		
81-91	B		
69-80	C		
55-68	D	60 D	64 D
39-54	E		
21-38	F		
1-20	G		