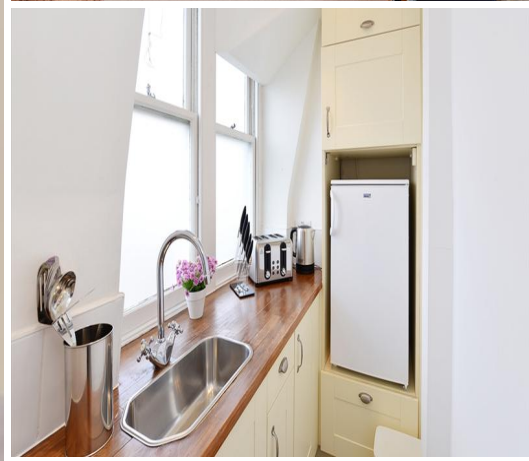




Hill Street, W1J 5NA

£3,077 per month | 1 Bedroom Flat





Hill Street, W1J 5NA

£3,077 per month | 1 Bedroom Flat

This beautiful eighth floor, one bedroom apartment comprises of a large double bedroom, bathroom, spacious reception room with rear facing views over Hay"s Mews and a unique kitchenette with access to a private gated communal garden.

The apartment is in one of London"s most prestigious locations, Mayfair neighbouring the famous Berkeley Square.

This beautiful purpose built building benefits from spacious living accommodation, lift service, on-site building manager, and is nestled conveniently between two of London"s parks Hyde Park and Green Park.

London underground stations, Green Park, Bond Street and Marble Arch are all within a short stroll away.



Tenant Terms & Fees

Tenancy fees and terms for tenants - Short Lets:

- A minimum of a four weeks deposit must be paid in advance for all short let rentals that exceed 60 days duration.
- For short let rentals all moving in monies have to be paid in advance for the duration of the tenancy.
- Long/Short Let Rentals - Mid tenancy to end of tenancy
- Tenant/Occupant change Fee £50 + VAT per person
- Deposit- where our client landlord is not a member of any insurance based or custodial scheme, such monies will be held Ashmore Estates Limited as stakeholder in an insurance based scheme TDS (Tenancy deposit scheme).

Tenancy fees and terms for tenants - Long Lets:

Should you wish to terminate your tenancy before the end of the fixed term and the landlord agrees that you can terminate early, you will be responsible for the repayment of the pro-rata commission paid in advance by the landlord for the unexpired portion of the tenancy, unless you are exercising a break clause which is contained in your tenancy agreement.

It is your obligation to obtain written consent from the landlord for any change in the identity of the tenants. Upon receipt of this consent Ashmore Residential will draw up a tenancy agreement for signature by all parties.

An administration fee of £25 will be charged for each letter sent by Ashmore Residential regarding late or non-payment of rent or administration charges.

Long/Short Let Rentals - Mid tenancy to end of tenancy.

Tenant/Occupant change Fee £50 + VAT per person

Deposit- where our client landlord is not a member of any insurance based or custodial scheme, such monies will be held Ashmore Estates Limited as stakeholder in an insurance based scheme TDS (Tenancy deposit scheme).

